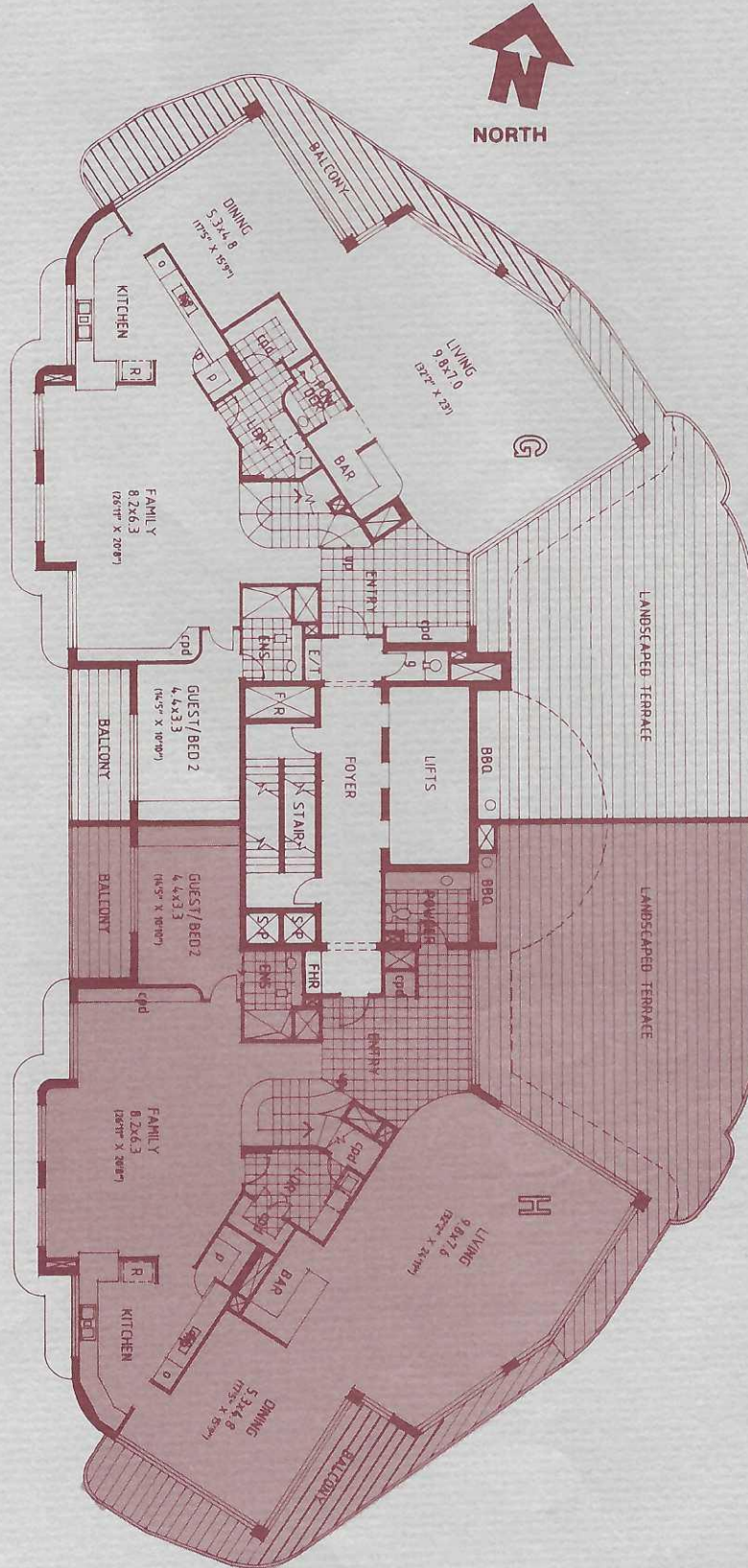


BAYVIEW
TOWER
PENTHOUSES

**BAYVIEW TOWER
FLOOR PLAN — LOWER PENTHOUSE**

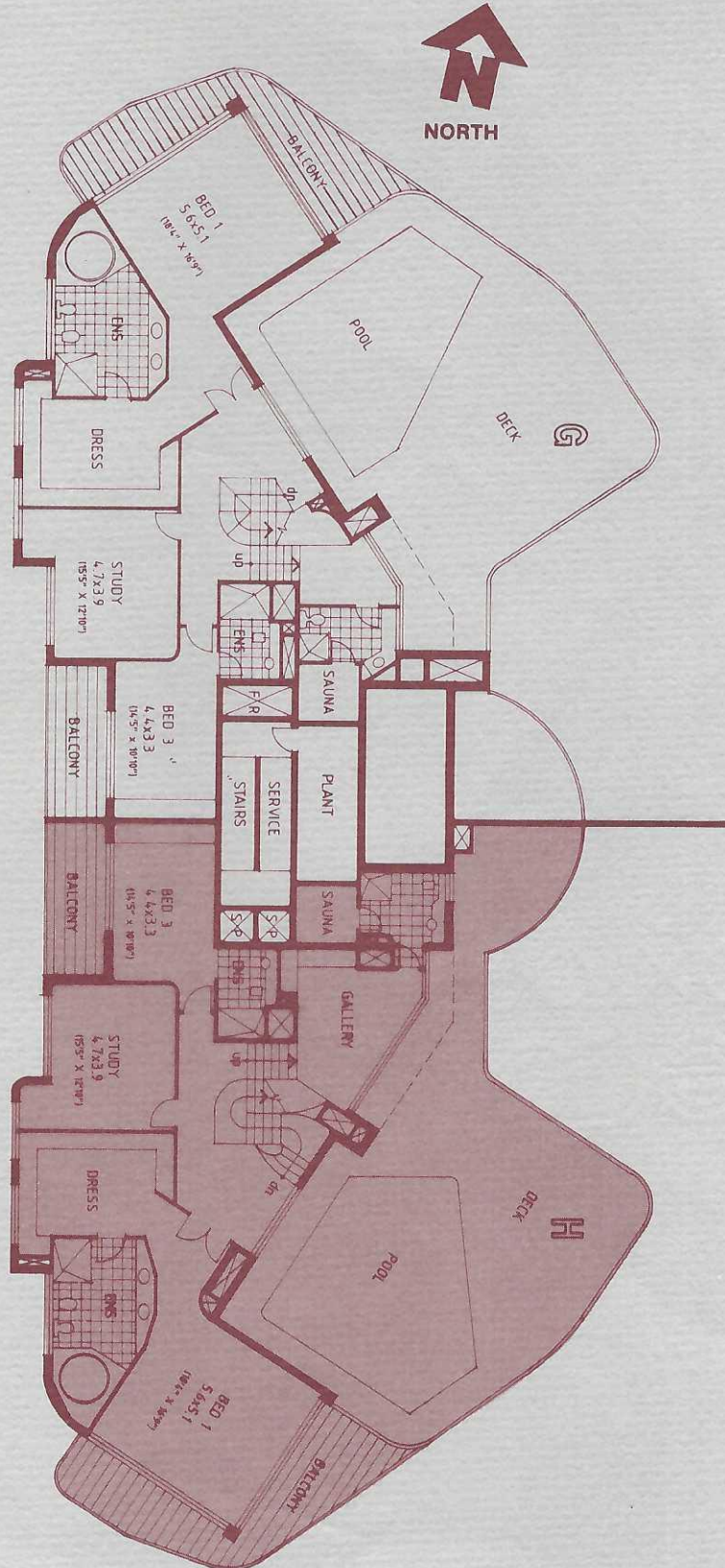
LOWER PENTHOUSE G — 396.0m² (42.6 squares) 4262 sq. ft.
LOWER PENTHOUSE H — 406.8m² (43.8 squares) 4378 sq. ft.
TOTAL PENTHOUSE G — 703.5m² (75.7 squares) 7571 sq. ft.
TOTAL PENTHOUSE H — 739.2m² (79.5 squares) 7955 sq. ft.



Sizes are approximate only and subject to alteration. The Developer reserves the right to divert from these inclusions and facilities as it deems necessary or as any relevant authority may require.

**BAYVIEW TOWER
FLOOR PLAN — UPPER PENTHOUSE**

UPPER PENTHOUSE G — 307.5m² (33.1 squares) 3309 sq. ft.
UPPER PENTHOUSE H — 332.4m² (35.7 squares) 3577 sq. ft.
TOTAL PENTHOUSE G — 703.5m² (75.7 squares) 7571 sq. ft.
TOTAL PENTHOUSE H — 739.2m² (79.5 squares) 7955 sq. ft.



Sizes are approximate only and subject to alteration. The Developer reserves the right to divert from these inclusions and facilities as it deems necessary or as any relevant authority may require.

PENTHOUSE INCLUSIONS

LOWER PENTHOUSE LEVEL:

- Spacious lounge/dining/family rooms.
- Guests/2nd bedroom with fully tiled ensuite.
- Bar.
- Powder room.
- Fully tiled laundry.
- Spacious kitchen.
- Outdoor B.B.Q. and landscaped terrace.

UPPER PENTHOUSE LEVEL:

- Master bedroom, walk in robe, ensuite with spa bath.
- Study.
- 3rd bedroom with fully tiled ensuite.
- Sauna and shower/change room.
- Heated swimming pool.
- Spacious deck area surrounding pool.

BOTH PENTHOUSE LEVELS:

- Reverse cycle, ducted air conditioning.
- Privacy and wide balconies.
- Intercom security.
- Quality carpets and tiles.

BASEMENT LEVEL:

- Double car space.

BUILDING FEATURES:

- Private landscaped gardens with heated indoor & outdoor swimming pools & spas, full-size all-weather tennis court, gymnasium, sauna, shower & toilet facilities, gazebos, barbeques & entertainment areas.
- On Site resident Manager and computerised access security keys and automatic emergency power.

COMPLEX FEATURES:

- 2 marina harbours.
- Private "Clipper Club" licensed restaurant & entertainment facilities.

SALES & INFORMATION
PHONE (075) 37 4388

Sales Office Open Daily
MARKETING AGENT

Bayview Harbour
Bayview Street
Gold Coast 4216
Queensland, Australia
FAX: (075) 37 2085

